

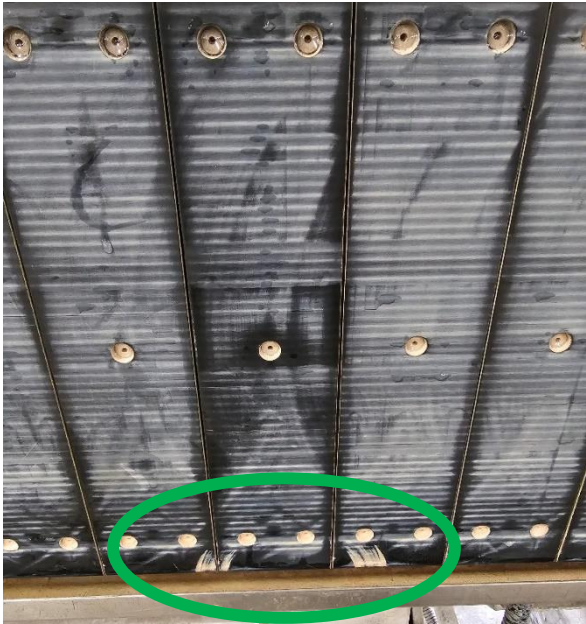
# **Bovone Pad Grinder**



## **Additional Information**

This Bovone pad grinder, made in Italy, is made to fit all the Bovone bevelling machines such as: Model ELB, Mini-Maxi, Veloce and Mini-Maxi III. This pad grinder can be mounted in the back beam only, where four locking bolts will secure it to the back beam. This will allow to equalize the thickness of all the pads to guarantee a perfect bevelling. Comes with instruction manual.

### **BEFORE**



### **AFTER**



## **Details**

Electrical information		Dimension	
Tension (V)	575	Length (in)	32
Power (KW)	2	Height (in)	17
Frequency (Hz)	60	Dept (in)	28
Current (A)	2.4		