



Custom acid-etched patterns

Explore the possibilities



Walker Textures®

Custom acid-etched patterns

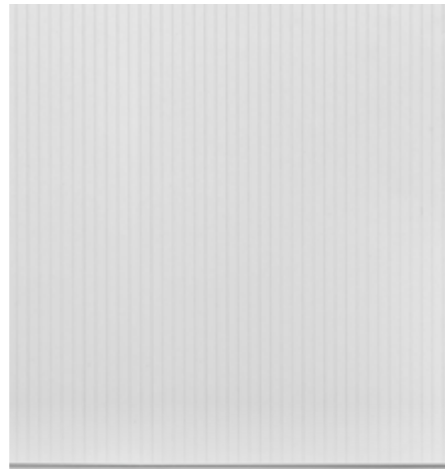


Here are some successful projects

The Options

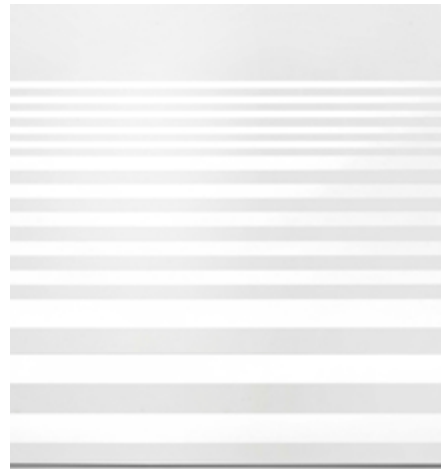
Architects, designers, and building owners have the choice between three different Walker Textures® acid-etching configurations to bring their visions to life. Each option has its own unique strengths and will be sure to add a touch of sophistication to the project design.

Etch on etch



This mixed etch option offers full privacy and light diffusion. Its uneven surface adds character and a chic element to the glass. A low-e coating can be applied on surface 2.

One-tone



This option offers all kinds of possibilities, whether you're aiming for privacy in a space or simply to bring a signature touch to a building façade or interior. A low-e coating can be applied on surface 2.

Both sides



This twice-etched option adds dimension to glass. The double-sided etch on thick glass such as 19mm provides a great deal of depth and a unique design element!

Moody's Investors Service

New York, NY



[See the project](#)

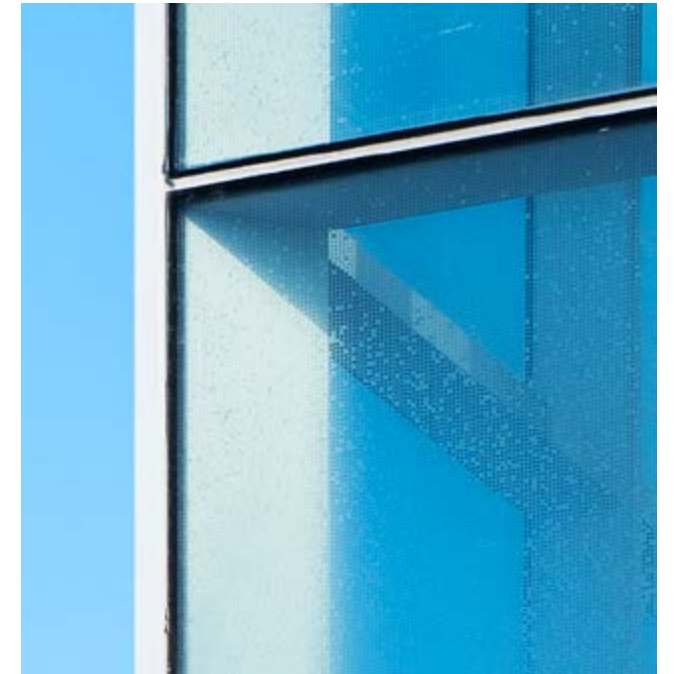
Prairie Shores

The Hub
Chicago, IL

The Hub at Prairie Shores is a vibrant amenities centre designed to promote active community life among residents of the upscale Prairie Shores apartment complex. This spacious structure, designed by Gensler architects, features complex acid-etched patterns on the exterior façade. Etched onto Starphire Ultra-Clear® glass from Vitro Architectural Glass, these custom patterns are a finely tuned solution that optimizes comfort, deters bird strikes, and creates a welcoming, contemporary atmosphere with ample visible light.

[See the project](#)

[Read the case study](#)



McMaster University

Peter George Centre for Living and Learning (PGCLL)
Hamilton, ON

The PGCLL is the largest building on McMaster's Hamilton campus, designed to create a total experience for new students. This building is the site of communal events, health care services, and student residences. These functions share a common goal: to generate a welcoming, comfortable space and a sense of belonging for students and staff. Architects Diamond Schmitt used clever design choices to achieve this goal, managing sightlines and daylighting with custom acid-etched glass patterns on the exterior surface combined with a low-e coating on surface 2.

[See the project](#)

[Read the case study](#)



A sustainable approach

Walker embraces responsible manufacturing to minimize environmental impact. The Walker Textures® custom design options have both EPD (Environmental Product Declarations) and HPD® (Health Product Declarations). Our environmentally responsible solutions can support architects' bids for multiple LEED® credits, such as Daylight, *Optimize Energy Performance* (when combined with low-e coating on surface 2), and of course *Bird Collision Deterrence*. The custom design options also meet the Buy Clean California Act, AB-262.

The benefits of custom acid-etched glass

- Energy efficiency (for etch on etch or one-tone etch combined with a low-e coating on surface 2)
- High VLT with unrestricted light flow
- Bird safety
- Light diffusion
- Ease of maintenance
- Sustainability
- Visual depth
- Glare reduction
- Interior and exterior applicability
- Privacy and views where needed
- Unique design possibilities

Product Specifications

Thickness From 3mm (1/8") to 19mm (3/4")

Dimensions 96" x 130" - on demand 72" x 130" or 84" x 130"

Substrates Clear, low-iron, tints

Etching 3 different possibilities:
Etch on etch, one-tone, or both sides

Availability This program is subject to a minimum quantity of one block of 4,000 lb or 1,000 sq ft of glass.

Energy **Low-e coatings available on surface 2** for etch on etch and one-tone options

Applications Exterior and interior

Pattern The design file must be submitted to Walker in Illustrator vector format (.ai, .eps, .pdf). For pattern design specifications, please contact your Walker representative.

Warranty **10-year limited warranty** against surface degradation. For all terms and conditions regarding the Walker Textures® glass warranty, please contact our Customer Service Department.

WALKER

Walker Glass Co. Ltd., 9551 Ray Lawson Blvd., Montreal QC H1J 1L5 Canada
Phone: 514 352.3030 or 1 888 320.3030
Email: info@walkerglass.com Website: www.walkerglass.com