



# Custom acid-etched patterns

Explore the possibilities



# Walker Textures®

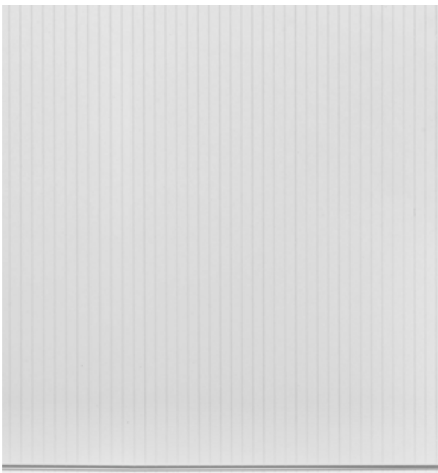
## Custom acid-etched patterns



## The Options

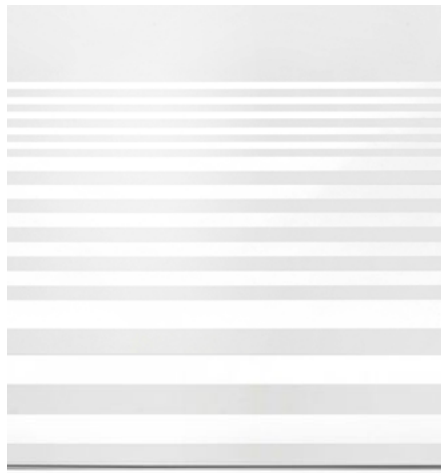
Architects, designers, and building owners have the choice between three different Walker Textures® acid-etching configurations to bring their visions to life. Each option has its own unique strengths and will be sure to add a touch of sophistication to the project design.

### Etch on etch



This mixed etch option offers full privacy and light diffusion. Its uneven surface adds character and a chic element to the glass. A low-e coating can be applied on surface 2.

### One-tone



This option offers all kinds of possibilities, whether you're aiming for privacy in a space or simply to bring a signature touch to a building façade or interior. A low-e coating can be applied on surface 2.

### Both sides



This twice-etched option adds dimension to glass. The double-sided etch on thick glass such as 19mm provides a great deal of depth and a unique design element!

## Moody's Investors Service New York, NY



[See the project](#)

# Here are some successful projects

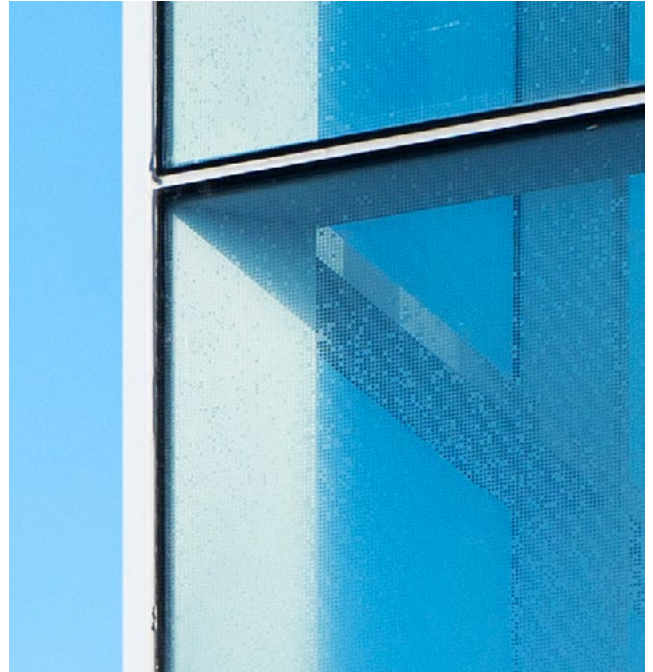
## Prairie Shores

The Hub  
Chicago, IL

The Hub at Prairie Shores is a vibrant amenities centre designed to promote active community life among residents of the upscale Prairie Shores apartment complex. This spacious structure, designed by Gensler architects, features complex acid-etched patterns on the exterior façade. Etched onto Starphire Ultra-Clear® glass from Vitro Architectural Glass, these custom patterns are a finely tuned solution that optimizes comfort, deters bird strikes, and creates a welcoming, contemporary atmosphere with ample visible light.

[See the project](#)

[Read the case study](#)



## McMaster University

Peter George Centre for Living and Learning (PGCLL)  
Hamilton, ON

The PGCLL is the largest building on McMaster's Hamilton campus, designed to create a total experience for new students. This building is the site of communal events, health care services, and student residences. These functions share a common goal: to generate a welcoming, comfortable space and a sense of belonging for students and staff. Architects Diamond Schmitt used clever design choices to achieve this goal, managing sightlines and daylighting with custom acid-etched glass patterns on the exterior surface combined with a low-e coating on surface 2.

[See the project](#)

[Read the case study](#)





## A sustainable approach

Walker embraces responsible manufacturing to minimize environmental impact. The Walker Textures® custom design options have both EPD (Environmental Product Declarations) and HPD® (Health Product Declarations). Our environmentally responsible solutions can support architects' bids for multiple LEED® credits, such as Daylight, *Optimize Energy Performance* (when combined with low-e coating on surface 2), and of course *Bird Collision Deterrence*. The custom design options also meet the Buy Clean California Act, AB-262.

## The benefits of custom acid-etched glass

- Energy efficiency (for etch on etch or one-tone etch combined with a low-e coating on surface 2)
- High VLT with unrestricted light flow
- Bird safety
- Light diffusion
- Ease of maintenance
- Sustainability
- Visual depth
- Glare reduction
- Interior and exterior applicability
- Privacy and views where needed
- Unique design possibilities

## Product Specifications

**Thickness** From 3mm (1/8") to 19mm (3/4")

**Dimensions** 96" x 130" - on demand 72" x 130" or 84" x 130"

**Substrates** Clear, low-iron, tints

**Etching** 3 different possibilities:  
Etch on etch, one-tone, or both sides

**Availability** This program is subject to a minimum quantity of one block of 4,000 lb or 1,000 sq ft of glass.

**Energy** **Low-e coatings available on surface 2** for etch on etch and one-tone options

**Applications** Exterior and interior

**Pattern** The design file must be submitted to Walker in Illustrator vector format (.ai, .eps, .pdf). For pattern design specifications, please contact your Walker representative.

**Warranty** **10-year limited warranty** against surface degradation. For all terms and conditions regarding the Walker Textures® glass warranty, please contact our Customer Service Department.

**WALKER**

Walker Glass Co. Ltd., 9551 Ray Lawson Blvd., Montreal QC H1J 1L5 Canada  
Phone: 514 352.3030 or 1 888 320.3030  
Email: info@walkerglass.com Website: www.walkerglass.com